

## 1. DOWNLOAD

PIHMgis source code is platform independent and it can be compiled under different operating system environments. For convenience, binaries for Windows and Macintosh operating systems are pre-compiled and made available for download under the DOWNLOADS tab from [http://www.pihm.psu.edu/pihmgis\\_home.html](http://www.pihm.psu.edu/pihmgis_home.html). Hence, you will need to select the version according to the specific operating system [as shown in figure below]. However, if you want to use it on a Linux system you will need to compile the source code that also requires meeting the library dependencies.

### Version 2.3

[Windows](#) | [Macintosh \(Leopard\)](#) | [Macintosh \(Snow Leopard\)](#) | [Source Code](#)

### 1.1 Windows (XP | Vista | Win7)

For Windows version you will be downloading a **.zip** file after following the link above, which contains the software. Extract all the files to a folder where you would like to keep (install) the software.

#### DOWNLOADS: PIHMGIS V2.3 FOR WINDOWS

[PIHMgis v2.3 Installer \[42.4 MB\]](#)

### 1.2 Macintosh

For Macintosh version you will download the PIHMgis software from the link provided above. Make sure you select appropriate version of the software according to the operation system you are running. There are two versions to choose from (1) for OS X 10.5 – Leopard or (2) OS X 10.6 – SnowLeopard. Note that version available for OS X10.5 is also compatible with OS X 10.4 - Tiger.

A quick way to check which OS version you are running is by clicking the Apple Logo on the top left corner of you screen and select “About This Mac” option [see figure below].



For Macintosh version download file is of **.dmg** format. Double click the .dmg file if it does not mount automatically. From the finder drag the PIHMgis app (application) to any location (folder) of your choice where you would like to install the software.

You will also need to download all the third party libraries listed on the download page (see figure below).

## DOWNLOADS: PIHMGIS V2.3 FOR MACINTOSH

---

PIHMgis v2.3 Installer\* [40 MB]

\* Install after installation of third party libraries

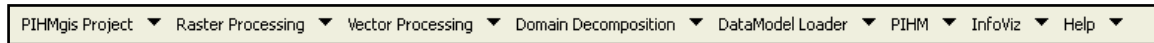
### Third party libraries:

1. qt-mac-opensource-4.3.2 [66.7 MB]
2. SQLite3\_Framework-3.5.3-1 [1.38 MB]
3. FFTW3\_Framework-3.1.2-3 [1.68 MB]
4. FreeType\_Framework-2.3.5-3 [1.66 MB]
5. PROJ\_Framework-4.6.0-1 [3.71 MB]
6. GEOS\_Framework-3.0.0rc4-7 [2.89 MB]
7. UnixImageIO\_Framework-1.0.20 [4.12 MB]
8. GDAL\_Framework-1.5.0-3 [46.3 MB]
9. pgsql-8.2.5-3 [21.6 MB]

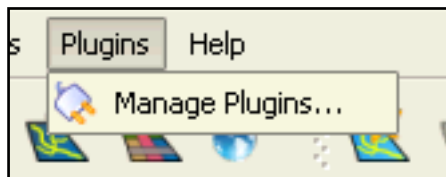
## 2. INITIAL SETUP

### 2.1 Windows

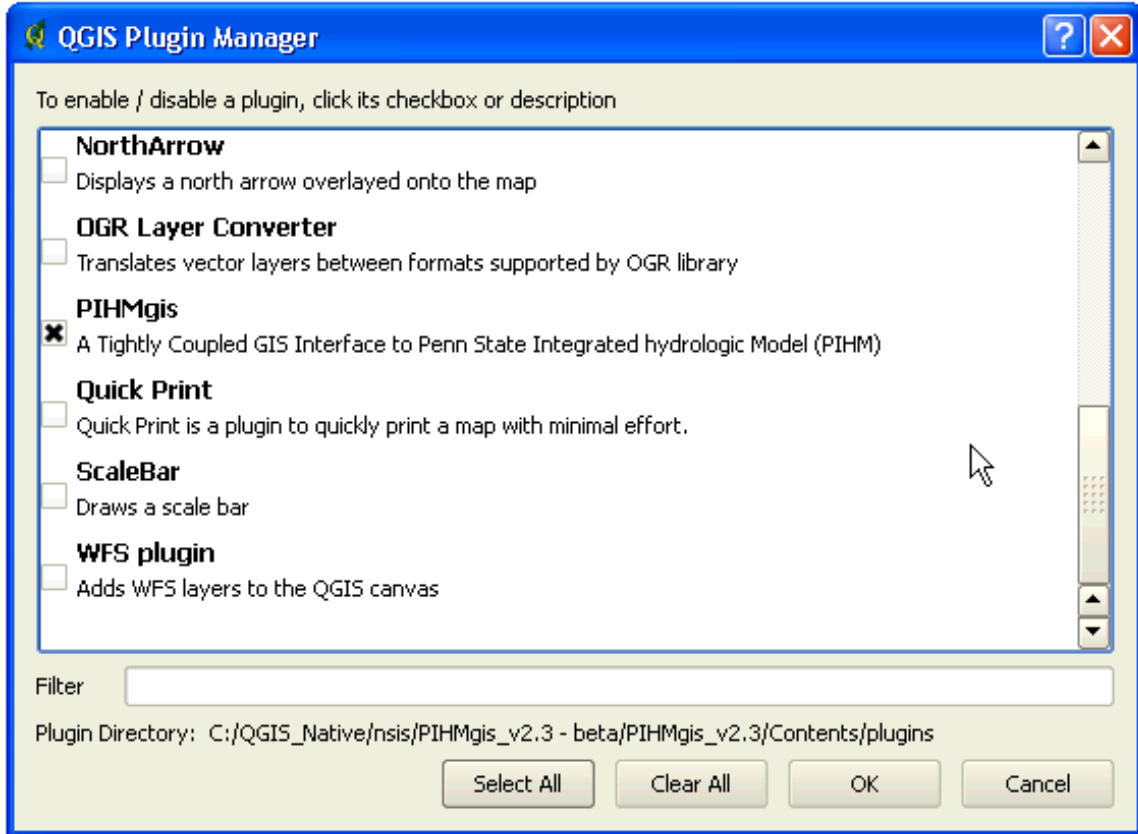
Launch the software using the script [Launch PIHMgis v2.3.cmd] that you will find under the folder you extracted. This will load the QGIS software. Once the software is loaded you need to enable PIHMgis toolbar [see figure below] if it is not active.



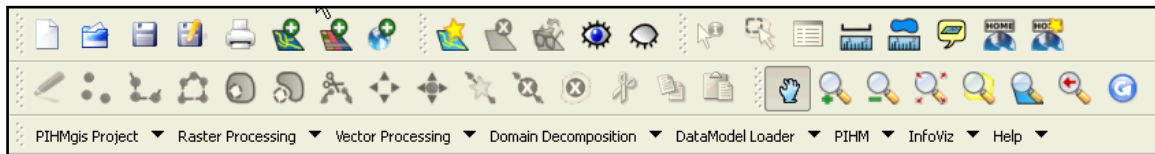
If the toolbar is not loaded -- you will need to load it manually. To load toolbar for the first time select the "Plugins" Menu and then click on "Manage Plugins..." (as shown in figure below)



This will bring a dialog with different plugin options that are available. Scroll down to locate PIHMgis on the list and check the box next to it (if it is unchecked). If you see that checkbox is already selected that means that toolbar is already loaded and may be hiding among other tools and you will need to just try to rearrange them.



Then click OK. This should load the PIHMgis toolbar as shown in figures below.



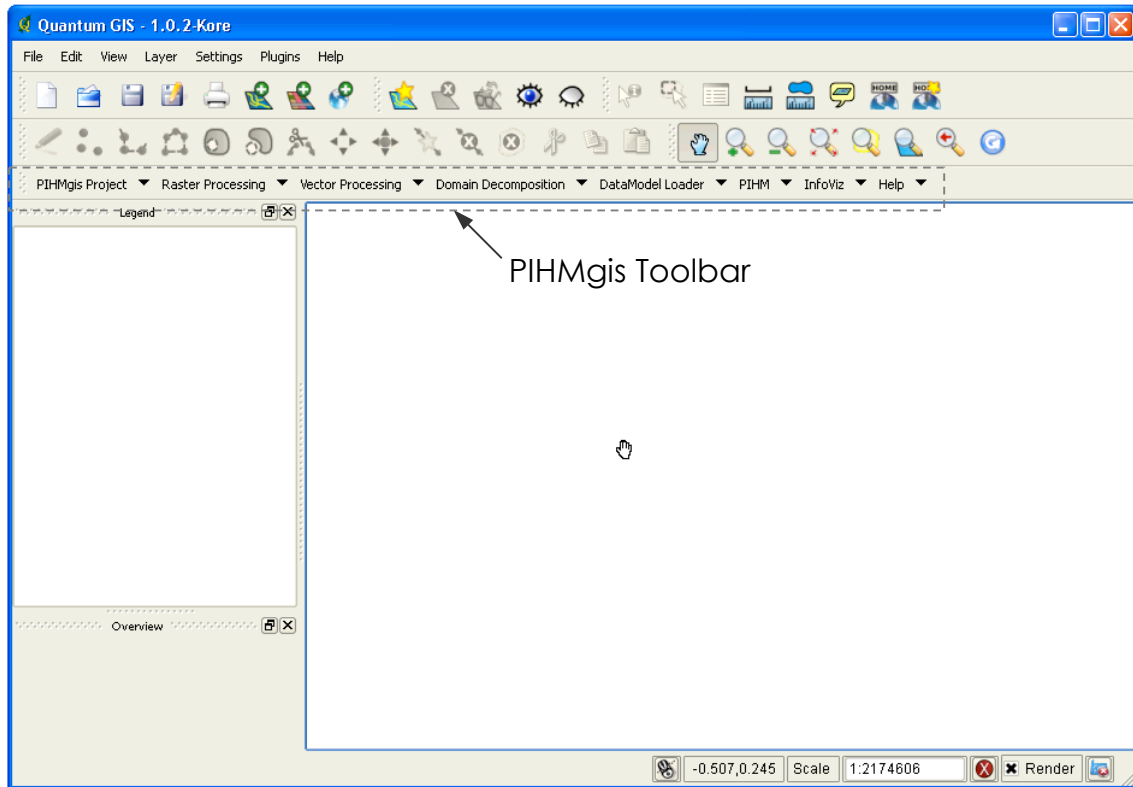


Figure: PIHMgis Interface

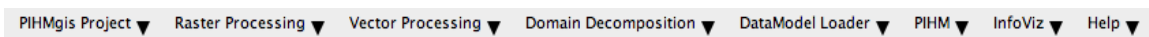
## 2.2 Macintosh

Before you could successfully launch PIHMgis application it is necessary that you install all the library dependencies. In order to do so you will need to install all third party libraries, previously downloaded. There are 9 libraries that you must download and install (list is shown below).



Installations of these libraries are fairly easy. They are .dmg format as well and contain .mpkg file(s) (those are package installers) and you can start installing just by double clicking the file and then simple instructions on the screen will guide you through the installation process.

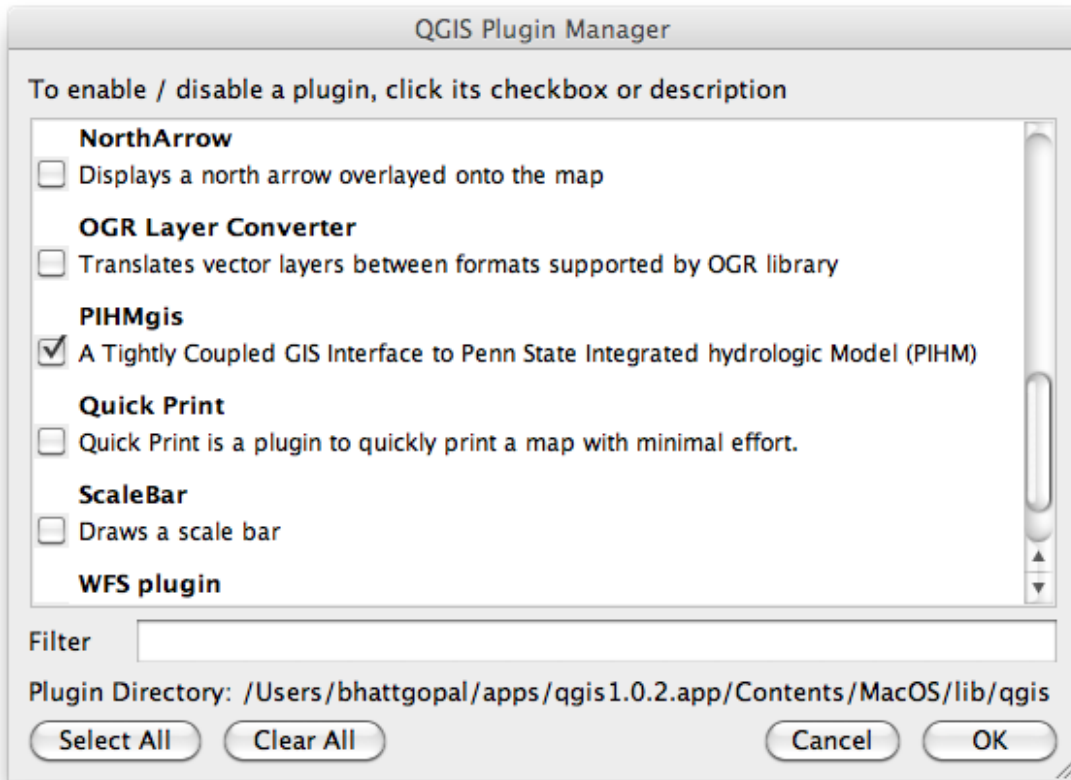
After all the libraries are installed you should be able to successfully launch PIHMgis. Once the software is loaded you need to enable PIHMgis toolbar [Figure] if it is not active.



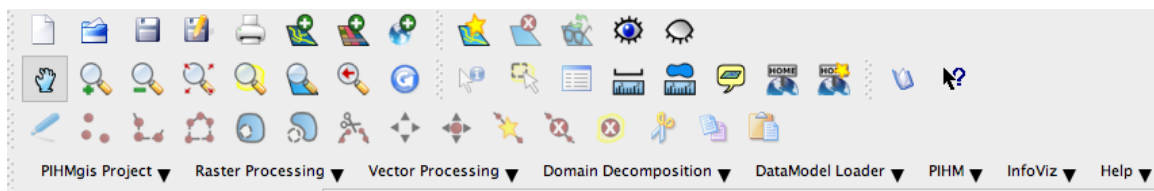
If toolbar is not already loaded you will need to load it manually. To load toolbar first select the Plugins Menu from the top of the screen and click Manage Plugins...



This will bring a dialog with different plugin options available. Scroll down to find PIHMgis on the list and check the box next to it.



Then click OK. This should load the PIHMgis toolbar on your screen.





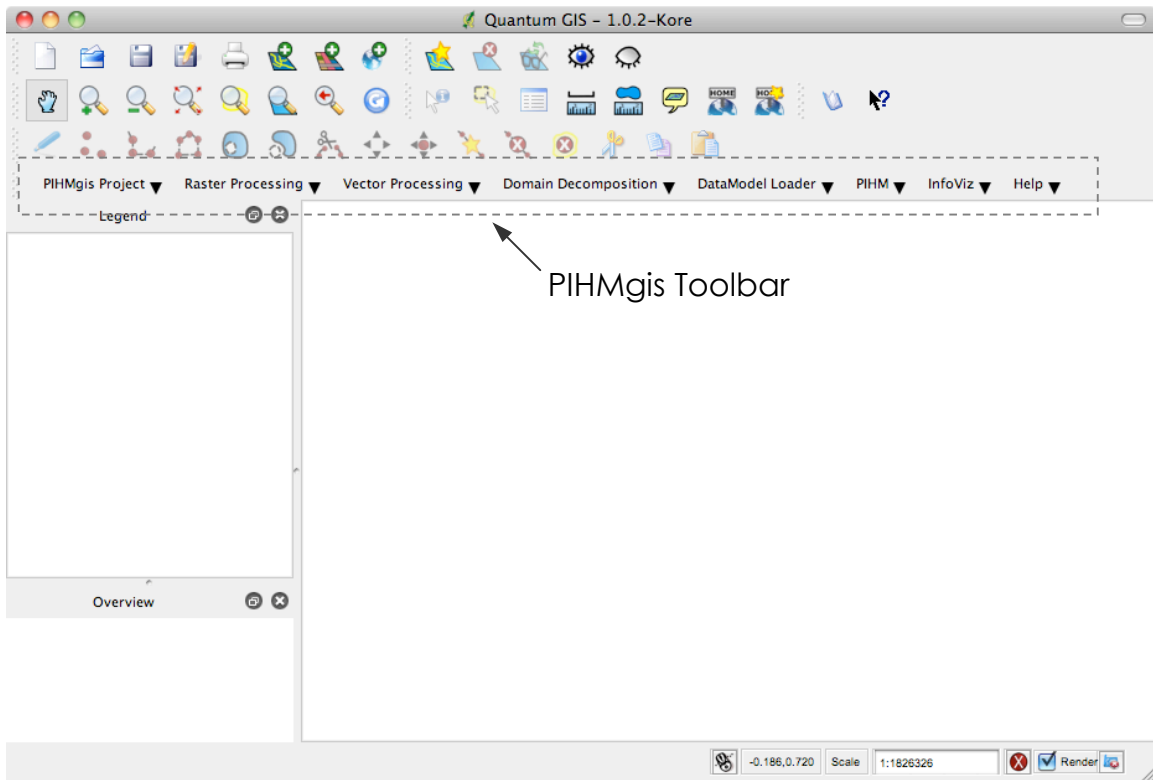


Figure : PIHMgis Interface

If you are here that means everything is working properly. Thanks.